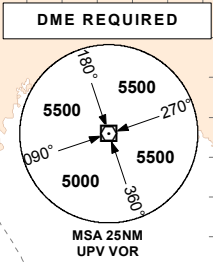


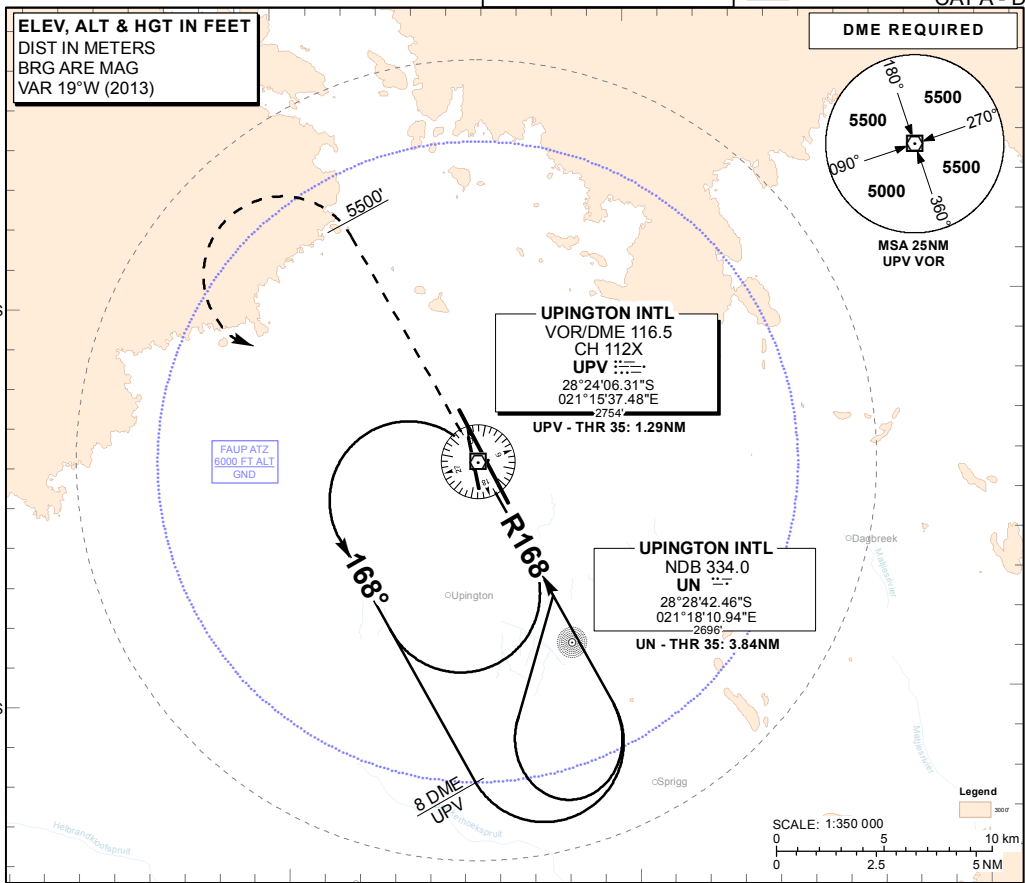


ELEV, ALT & HGT IN FEET
DIST IN METERS
BRG ARE MAG
VAR 19°W (2013)



28°20'S

28°30'S

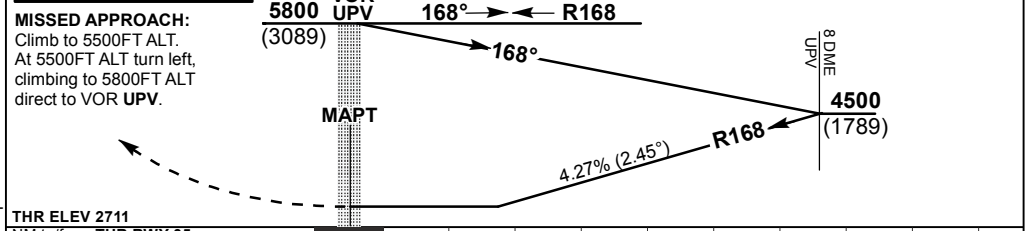


21°10'E 21°20'E 21°30'E

UPV DME	8	7	6	5		
ADVISORY ALT(HGT)	4500 (1789)	4250 (1539)	3990 (1279)	3730 (1019)		

TRANSITION ALT 5500
TRANSITION LEVEL ATC

INA ALT: 5800 or higher MSA



0 1 2 3 4 5 6 7 8 9

					GS	KT	80	100	120	140	160	
OCA (H)					A	B	C	D				
Straight-in Approach	VOR	3670 (959)	3670 (959)	3670 (959)	3670 (959)							
Circling	Circle to land at the discretion of the pilot in command											
					8 DME to THR	M:S	5:02	4:02	3:21	2:53	2:31	
					Rate of descent	FPM	346	432	518	605	691	
NOTE:												
1. Procedure Turn Approach applicable only within 30° of the Outbound Heading. Use phraseology "Request Procedure Turn Approach".												
2. RoD from 8 DME UPV computes at 2.45°.												
3. Circle to land at the discretion of the pilot in command.												

CHANGE: New Format/Airspace